

HOPI TRIBE/ADOT/FHWA/BIA/  
COCONINO COUNTY/NAVAJO  
COOUNTY/NDOT

PARTNERSHIP MEETING  
OCTOBER 2, 2009



---

---

---

---

---

---

---

---

ADOT WORK ON HOPI LANDS

SUMMER OF 2009



---

---

---

---

---

---

---

---



**SR 264 Flush coat** -  
seals up the pavement  
and extend its life



---

---

---

---

---

---

---

---



**SR 264 Cinder Seal** –seals up the pavement, improves skid resistance and extends pavement life

---

---

---

---

---

---

---

---



**SR 264 Deck Joint repair**

---

---

---

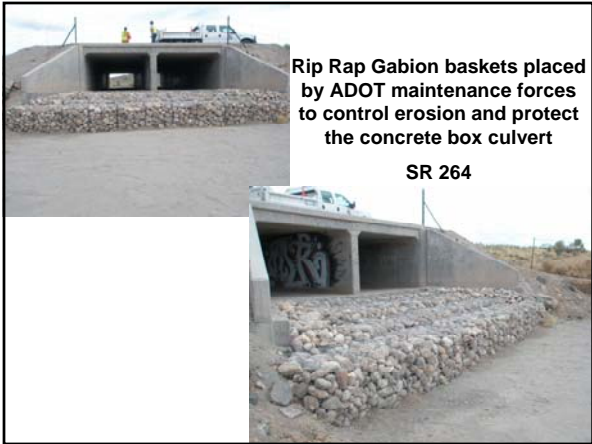
---

---

---

---

---



**Rip Rap Gabion baskets placed by ADOT maintenance forces to control erosion and protect the concrete box culvert**

**SR 264**

---

---

---

---

---

---

---

---



Isolated pavement repairs by milling (Zipper) and replacement of Asphalt  
SR 264

---

---

---

---

---

---

---

---



Traffic Control and repairs from numerous types of accidents

---

---

---

---

---

---

---

---

**RECENT PROJECTS**

POLACCA Turning Lanes -SR 264, MP 390-392 \$1,114,765 **COMPLETE**

VANS TRADING POST Widen from 2 lane to multilane, concrete curb & gutter & drainage. SR US 160, mp 319.7-322.7, \$7,926,683 **COMPLETE**

TUBA CITY-COAL MINE ROAD(I), new pavement, guardrail, bridge barrier. SR 264, mp 323.9-340.2 \$2,761,733 **COMPLETE**

TUBA CITY-COAL MINE ROAD(II), Rockfall containment, new pavement, misc improvements. SR 264, mp 322.0-322.7 \$1,761,163 **COMPLETE**

CINDER SEAL SR 264, MP 362.7-373.7 \$250,000 **COMPLETE**

---

---

---

---

---

---

---

---

**Projects currently under design**

KEAMS CYN TRADING POST TURN LANES SR 264, MP 403, \$740,000 under design FY 2011

CONCRETE BOX CULVERT SR 264, MP 374.3, \$600,000 under design FY 2011

CRACK SEALING, SR 264, MP 403-412, \$112,000 FY 2010

CRACK SEALING, SR 264, MP 418.3-426, \$96,000 FY 2010

NEW PAVEMENT (Leveling) SR 264, MP 382.5-383.2 \$315,000 under design, FY 2010/11



---

---

---

---

---

---

---

---

**Projects currently under design  
continued**

TUBA CITY LIGHTING, Roadway lighting, US 160 & SR 264, mp 322.0-322.6 & 322.9-322.8 \$1,874,000, bids in fall of 2009

NEW PAVEMENT OVERLAY, SR 87, MP346-368 \$6,500,00 under design, FY 2012

NEW PAVEMENT (Leveling) SR 264, MP 359.5-361.3 \$510,000 under design, FY 2010/11



---

---

---

---

---

---

---

---

**DOLLAR VALUE OF ADOT  
PROJECTS RECENTLY  
COMPLETED**

**\$13,814,344**

**PROJECTS PLANNED OR IN  
DESIGN:**

**\$10,747,000**

**TOTAL \$24,561,344**



---

---

---

---

---

---

---

---



---

---

---

---

---

---

---

---



---

---

---

---

---

---

---

---



---

---

---

---

---

---

---

---



Completed Rock fall project, SR 264, near Moenkopi

---

---

---

---

---

---

---

---



PLACING DRAINAGE FEATURES  
NEAR MOENKOPI

---

---

---

---

---

---

---

---



WEPO WASH BRIDGE  
mile post 388.6  
SR 264

Maintenance cleaning sand &  
silt from under WEPO wash  
bridge, summer of 2007

---

---

---

---

---

---

---

---



Sand/Silt piles to be removed from under WEPO wash bridge, summer, 2007

---

---

---

---

---

---

---

---



WEPO wash bridge channel, August, 2009  
Looking downstream

---

---

---

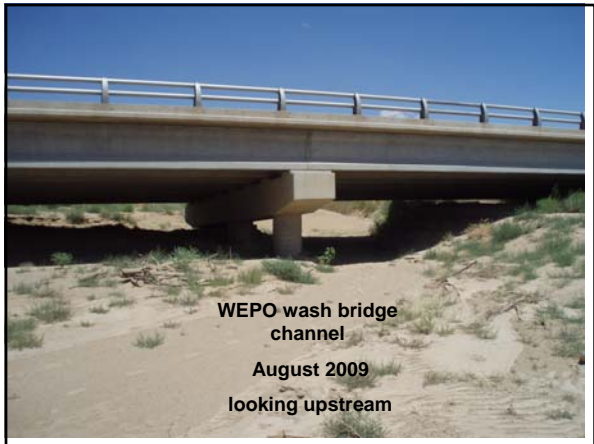
---

---

---

---

---



WEPO wash bridge channel  
August 2009  
looking upstream

---

---

---

---

---

---

---

---



WEPO wash bridge  
channel  
August 2009  
Looking West

---

---

---

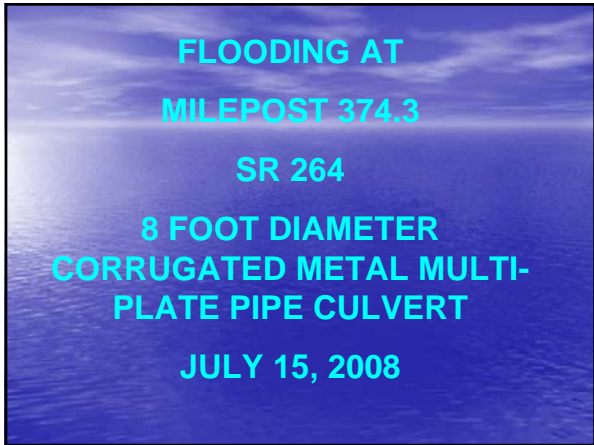
---

---

---

---

---



FLOODING AT  
MILEPOST 374.3  
SR 264  
8 FOOT DIAMETER  
CORRUGATED METAL MULTI-  
PLATE PIPE CULVERT  
JULY 15, 2008

---

---

---

---

---

---

---

---



When it rains it  
pours...

---

---

---

---

---

---

---

---





---

---

---

---

---

---

---

---



---

---

---

---

---

---

---

---



---

---

---

---

---

---

---

---



**DEBRIS PARTIALLY PLUGGING  
PIPE WAS A CONTRIBUTING  
FACTOR**

---

---

---

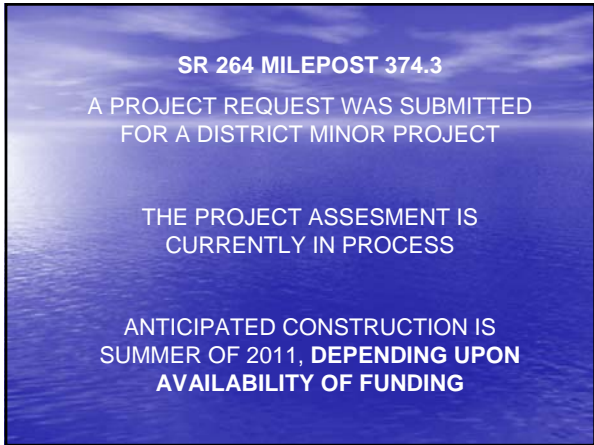
---

---

---

---

---



**SR 264 MILEPOST 374.3**  
A PROJECT REQUEST WAS SUBMITTED  
FOR A DISTRICT MINOR PROJECT  
  
THE PROJECT ASSESMENT IS  
CURRENTLY IN PROCESS  
  
ANTICIPATED CONSTRUCTION IS  
SUMMER OF 2011, **DEPENDING UPON**  
**AVAILABILITY OF FUNDING**

---

---

---

---

---

---

---

---



**SR 87, MILEPOST 400.1  
POLACCA WASH**

---

---

---

---

---

---

---

---



---

---

---

---

---

---

---

---



---

---

---

---

---

---

---

---

**MAINTENANCE FUNDING**

In Fiscal year 2009, maintenance funding was cut by 15%

In Fiscal year 2010 maintenance funding was cut by an additional 10%

**Areas ADOT has/will cut back:**

- MATERIAL PURCHASES
- ASPHALTIC PATCHING MATERIALS,
- GUARDRAIL, FENCE,
- FLEET REDUCTION
- PARKING OF EQUIPMENT
- NO PLANNED OVERTIME
- NO OVERNIGHT TRAVEL
- CLOSURE OF 13 REST AREAS STATE WIDE

---

---

---

---

---

---

---

---

## WHAT IT REALLY MEANS

We are only spending money on  
"MISSION CRITICAL" work  
EMERGENCIES or CLOSE to being an  
EMERGENCY

The general public will be  
affected by seeing reduced  
levels of service.



---

---

---

---

---

---

---

---

## SO WHAT'S THE GOOD NEWS?

WE ARE HERE TODAY WORKING TOGETHER  
TO SOLVE ISSUES AND IMPROVING OUR  
PARTNERING RELATIONSHIPS

ALTHOUGH WE DON'T HAVE FUNDS TO DO  
EVERYTHING WE WANT, OR BELIEVE WE  
NEED TO, WE CONTINUE TO MOVE  
FORWARD WITH IMPROVEMENTS

WE HAVE VERY CAPABLE, CONSCIENTIOUS  
WORKERS WHO STRIVE DAILY TO MAINTAIN,  
REPAIR AND KEEP SAFE THE ADOT  
ROADWAYS ON THE HOPI RESERVATION

**WE ARE ALL STILL EMPLOYED!**



---

---

---

---

---

---

---

---

## ANY QUESTIONS?

**THANK YOU!**



---

---

---

---

---

---

---

---