



---

---

---

---

---

---

---

---

**Navajo Nation Profile**

- Navajo Nation Government established 1923
- Three Branch Government
  - Executive
  - Judicial
  - Legislative
- Land Base
  - 27,427 square miles (size of West Virginia)
  - Located in parts of New Mexico, Arizona and Utah
  - Three satellite communities (Ramah, Tohajilee, Alamo)
- Population
  - 2000 Census at 256,712 @ 4.96% growth rate

2

---

---

---

---

---

---

---

---

**Navajo Nation Profile** continues

- Navajo Nation Economy
  - Governments @ 44.3%
  - Private Sector @ 52.2%
  - Self-employed @ 3.5%
- Public Transportation
  - Navajo Transit System is the only public transportation service
  - Operate along state highways and Navajo routes
  - 51% customers are general public
  - 12% customers are elderly
  - 37% others

3

---

---

---

---

---

---

---

---

### Navajo Transit System

- Started fixed route operation in October 1980
- Funded by:
  - Arizona DOT (5311)
  - New Mexico DOT (5311)
  - FTA Tribal Transit Program (5311a)
  - Utah DOT (5311)
  - Navajo Nation (Match Funds)

4

---

---

---

---

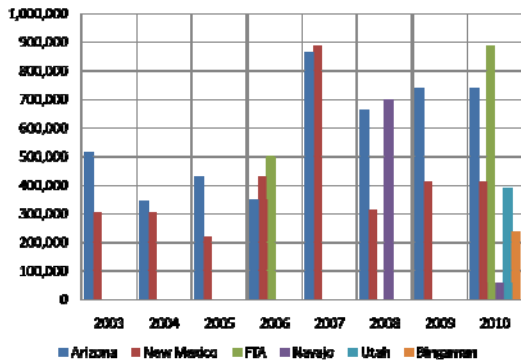
---

---

---

---

Funding Agencies



5

---

---

---

---

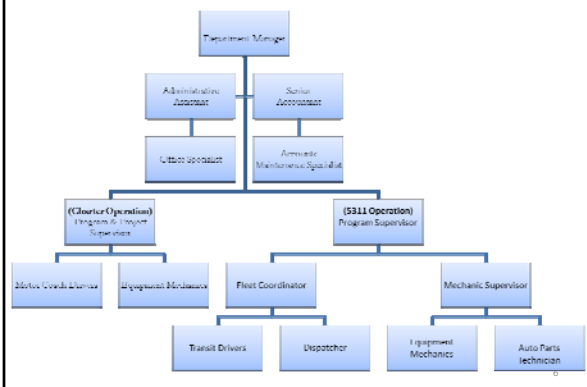
---

---

---

---

NTS Organizational Chart



6

---

---

---

---

---

---

---

---

| Routes                            | Daily Miles | Daily Hours | Weekly Miles | Weekly Hours |
|-----------------------------------|-------------|-------------|--------------|--------------|
| 1. Tuba City/Window Rock          | 169         | 8:20        | 845          |              |
| 2. Tuye/Fort Defiance             | 146         | 4:15        | 730          |              |
| 3. Shonto/Window Rock             | 430         | 10:05       | 2,060        |              |
| 4. Crownpoint/Window Rock         | 185         | 6:10        | 925          |              |
| 5. Window Rock/Gallup             | 253         | 12:05       | 765          |              |
| 6. Navajo/Gallup                  | 169         | 5:35        | 845          |              |
| 7. Shiprock/Window Rock (M&F)     | 338         | 8:25        | 676          |              |
| 8. Shiprock/Farmington (T,W,Th)   | 196         | 5:40        | 588          |              |
| 9. Shiprock/Window Rock           | 338         | 7:30        | 1,690        |              |
| 10. Shiprock/Fruitland            |             |             |              |              |
| 11. Flagstaff/Tuba City           | 304         | 7:40        | 1,520        |              |
| 12. Kayenta/Tuba City             | 294         | 7:50        | 1,470        |              |
| 13. Window Rock/Crownpoint/Gallup | 298         | 7:40        | 1,490        |              |
| 14. Chinle/Ganado                 | 162         | 7:00        | 810          |              |
| 15. Dilkon/Fort Defiance          | 236         |             | 1,180        |              |

---

---

---

---

---

---

---

---

---

---

## Marketing



---

---

---

---

---

---

---

---

---

---

## Exhibits



---

---

---

---

---

---

---

---

---

---

### Training

- Defensive Driving
- First Aide
- CPR
- Customer Service
- Drug & Alcohol
- Administrative Support
- Financial
- Mechanical



10

---

---

---

---

---

---

---

---

### Chair Lift training



11

---

---

---

---

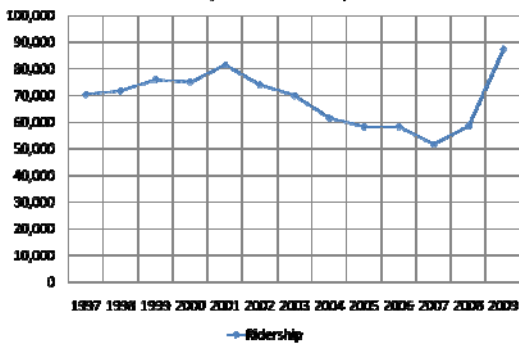
---

---

---

---

### Navajo Transit Ridership



12

---

---

---

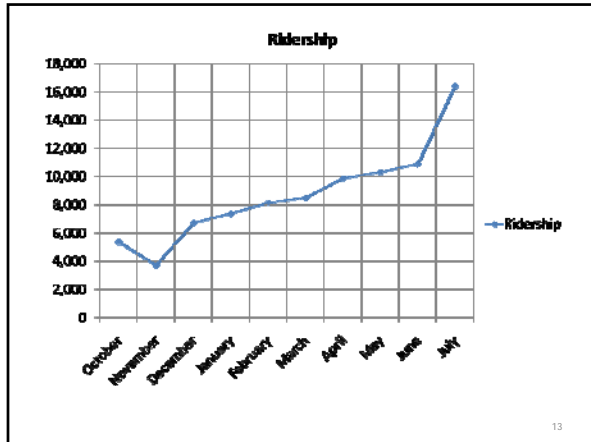
---

---

---

---

---



---

---

---

---

---

---

---

---

- Transit Fleet**
- 13 motor coaches
  - 12 mid size buses
    - 6 vans
  - 2 utility truck
  - 1 truck
- 14

---

---

---

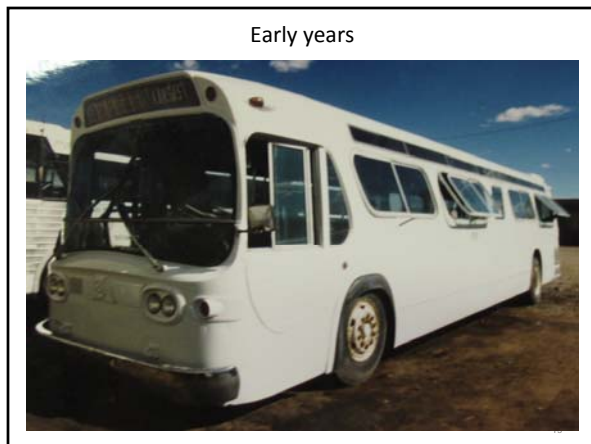
---

---

---

---

---



---

---

---

---

---

---

---

---

Lee Bigwater  
Navajo Transit Update  
Handout # 5

Early Years



---

---

---

---

---

---

---

---

Current Fleet



---

---

---

---

---

---

---

---

Current transit bus



---

---

---

---

---

---

---

---

Lee Bigwater  
Navajo Transit Update  
Handout # 5



19

---

---

---

---

---

---

---

---



20

---

---

---

---

---

---

---

---



21

---

---

---

---

---

---

---

---

### Navajo Transit System Five Year Plan

- Reorganize NTS administration & operation
- Expansion of transit routes
  - Local transit service in Chinle (Started August 2008)
  - Diltcon/Window Rock (Started February 2009)
  - Flagstaff/Tuba City (Started January 2009)
  - Shiprock/Fruitland (Started November 2008)
  - Kayenta/Tuba City
  - Window Rock/Crownpoint (Started March 2009)
  - Blanding/Montezuma Creek
  - Shiprock/Window Rock (Started July 2009)
  - Sanders/Window Rock
  - Other un-served areas of the Navajo Nation
- Build a new transit administration & maintenance facility
- Build designated bus stops with shelters on all routes

22

---

---

---

---

---

---

---

---

---

---

### NTS plan continue

- Build transit facility at population centers
- Provide more employee training to meet requirements
- Seek other transit system funds for NTS improvements
  1. State of Utah
  2. Counties
  3. Navajo Chapters
  4. Federal Transit Administration
- Partnership with other transit operators
  1. Border Towns

23

---

---

---

---

---

---

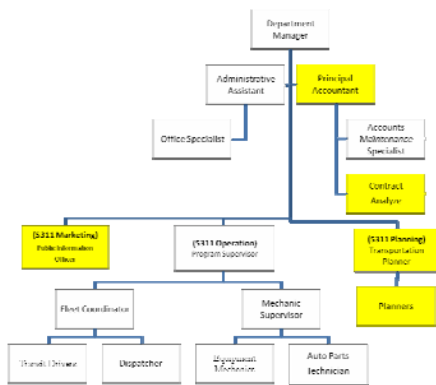
---

---

---

---

### NTS Organizational Chart



24

---

---

---

---

---

---

---

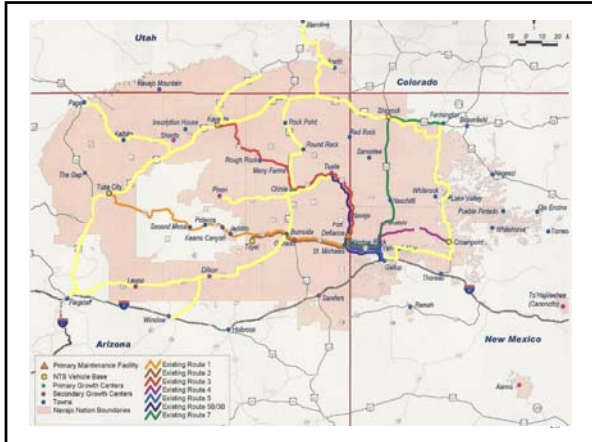
---

---

---



Lee Bigwater  
Navajo Transit Update  
Handout # 5



---

---

---

---

---

---

---

---



---

---

---

---

---

---

---

---